



SWH-3114FX / W2X

12 Ports 10/100/1000BASE-T Managed Ethernet Switch with 2 Ports Giga Fiber Uplink

KEY FEATURES

- Comply with IEEE 802.3 10BASE-T, 802.3u 100Base-TX, 802.3ab 1000Base-T, & 802.3z 1000Base-X standards
- Comply with Metro Ethernet MEF9 UNI standard
- Twelve 10/100/1000Base-T ports ,two 1000Base-X ports
- Store and Forward Switching Mechanism
- Auto-Cross over for MDI/MDI-X in TP port
- Auto-Negotiation in TP port
- Support Power ,Console , Fiber 1 , Fiber 2, Link/Act , Speed LED
- Support SNMP, Web, Telnet and Console management
- Comply with IEEE 802.1p Priority
- Comply with IEEE 802.1q Tag VLAN
- Comply with IEEE 802.1w Rapid Reconfiguration of Spanning Tree
- Support IEEE 802.3ad Link Aggregation up to 6 trunks and 12 ports in a trunk
- Support jumbo frame on all ports up to 9k size
- Support QoS Classification based on IEEE802.1p and DSCP
- Support Double Tag VLAN (Q-in-Q)
- Support Rate Limit Control
- Support SNTP Time Server
- Support IGMP Snooping v1, v2 and v3 *
- Support DHCP client and provision server
- Support FTP, TFTP server and client firmware upgrade
- Support SNMP v1, v2c and v3 * network management
- Support private, RFC-1213, RMON
- Support Power Down Trap Management
- Support Radius Authentication
- Book size form factor for convenience of FTTX installation



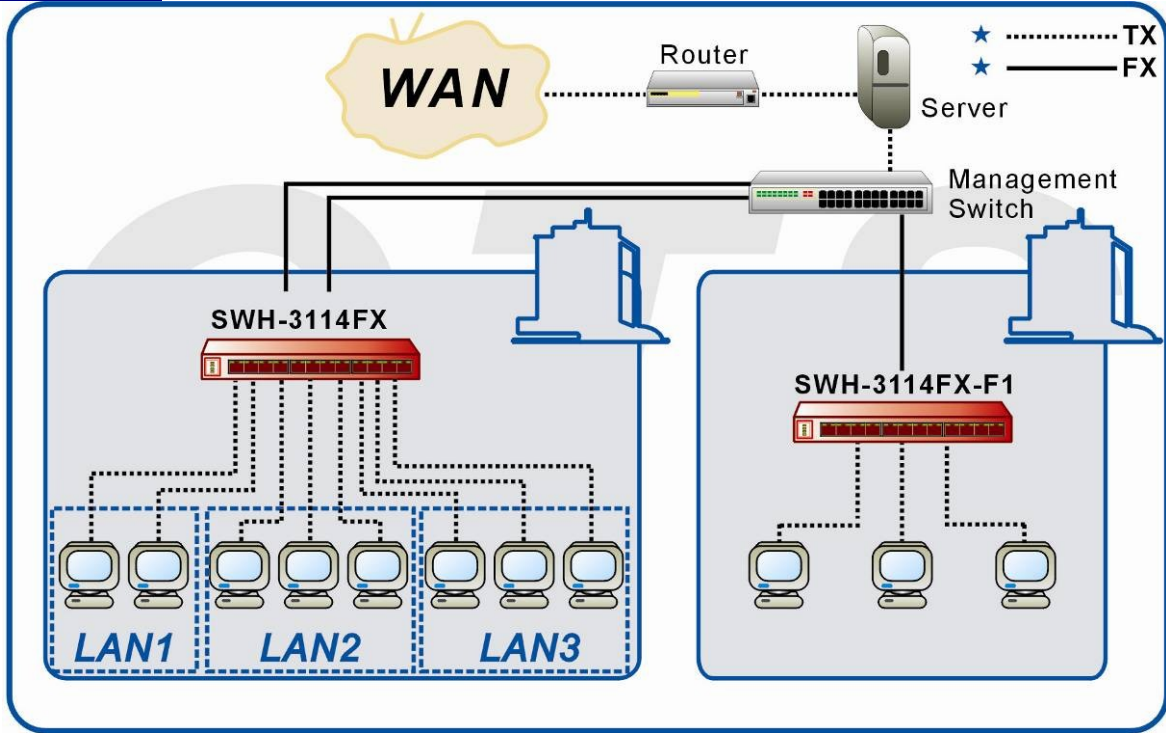
Mark “*” means coming soon.

DESCRIPTIONS

SWH-3114FX/W2X Switch from Connection Technology Systems adopts the emerging CTS technology and able to expand a copper based network from 550m up to 80km through optical fibers. It is going to provide robust and versatile features to fulfill the FTTX demand like Gigabit bandwidth, QoS, Q-in-Q VLAN stacking, Rate limit, SNMP and Web Management. In addition, to achieve the max compatibility with other Metro-Ethernet equipment, SWH-3114FX/W2X is designed to fully comply with MEF9 UNI test standard.

SWH-3114FX/W2X is fully compliant with IEEE802.3, 802.3u, 802.3ab, and 802.3z standards. The installation & operation procedures of SWH-3114FX/W2X are simple & straightforward. Diagnostic LEDs located in the front panel indicate the real time operating status.

APPLICATION



SPECIFICATIONS

Standard

IEEE 802.3 10Base-T
 IEEE 802.3u 100Base-TX
 IEEE 802.3ab 1000Base-T
 IEEE 802.3z 1000Base-X
 IEEE 802.1w Rapid Spanning Tree
 IEEE 802.1p Priority
 IEEE 802.1q Tag VLAN
 IEEE 802.3ad Link Aggregation

Interface

10/100/1000Mbps RJ-45 port x 12
 1000Mbps FX port x 2

LED

Power , Console , Fiber 1 , Fiber 2 ,
 Link/Act , Speed

Redundancy

TP/FX all support

Product Spec:

Mac address table: 8K
 Memory buffer: 340K
 VLANs: Support up to 64 VLAN Groups
 Priority Queues: 4 Queues

Forward / Filter Rate

10M: 14,880/14,880pps
 100M: 148,800/148,800pps
 1000M: 1,488,000/1,488,000pps

Power

External Power adapter:
 Input AC 120V-240V
 Output DC 12V
 Power Consumption: 15W

Typical Operation & Storage Temperature

Operation: 0° ~ 50°C
 Storage Temperature: -20° ~ 60°C
 Humidity: 5% ~ 90% non-condensing

Dimension & Weight

Size: 240 x 155 x 34 mm (WxDxH)
 Shipping Weight: 1.75KG

Emission/Safety

FCC Class A, CE
 * For further reports, please contact us for update.

ORDER INFORMATION

MODEL	FIBER PORT					TP PORT		SUPPORT POWER SOURCE
	Speed	Type	Connector	Distance	Ports	Speed	Ports	Power Type
SWH-3114FC	1000	MM	SC	550M	2	10/100/1000	12	External Power adapter
SWH-3114FC(SM-10/20/30/50/80)	1000	SM	SC	10/20/30/50/80KM	2	10/100/1000	12	External Power adapter
SWH-3114W2A(SM-10/20/40)	1000	WDM	SC	10/20/40KM	2	10/100/1000	12	External Power adapter
SWH-3114W2B(SM-10/20/40)	1000	WDM	SC	10/20/40KM	2	10/100/1000	12	External Power adapter
SWH-3114FC-F1	1000	MM SFP	SC -	550M -	1 1	10/100/1000	12	External Power adapter

SWH-3114FC(SM-10/20/30/50/80)-F1	1000	SM SFP	SC -	10/2030/50/80KM -	1 1	10/100/1000	12	External Power adapter
SWH-3114W2A(SM-10/20/40)-F1	1000	WDM SFP	SC -	10/20/40KM -	1 1	10/100/1000	12	External Power adapter
SWH-3114W2B(SM-10/20/40)-F1	1000	WDM SFP	SC -	10/20/40KM -	1 1	10/100/1000	12	External Power adapter
SWH-3114SFP	1000	SFP	-	-	2	10/100/1000	12	External Power adapter

