

Product Positioning

- Access layer of broadband IP MANs and enterprise networks
- Aggregation/access devices for large enterprises, residential areas, hotel, and college campus networks with combinations of optical and electrical interfaces

Efficient Integration, Easy Maintenance

ZXR10 2900E series are the new-generation Easy-maintenance Ethernet switches, which are designed to meet Ethernet multi-service bearing and various Ethernet access environments, either in IP metro networks or enterprise networks. Five product types are provided: 2910E-PS, 2918E, 2918E-PS, 2928E and 2952E.



Features and Advantages:

Easy-Green

Following green and eco-friendly design philosophy, ZXR10 2900E assists the customers to reduce power consumption in all the aspects of design, operation, installation and maintenance.

- No fan and no noise (2918E/2928E/2952E).
- The product design completely meets European RoHS standards.
- The 2900E series utilize the most advanced “green” chip technology, reducing power consumption of the core chip by 20%.
- The products adopt the latest energy-saving techniques, such as disabling the unused ports and dynamically adjusting port power according to cable length.

Easy-Maintenance

- The innovative M-Button enables users to observe status of the ports, memory, CPU, data traffic and other information, without login to the switch. It helps improving maintenance efficiency and reducing OPEX to the utmost extent.
- The uplink ports support both GE and FE SFP transceivers and thus it's flexible in network building.
- Zero Configuration feature enables plug-and-play and drastically reduces maintenance costs.

Easy-Security

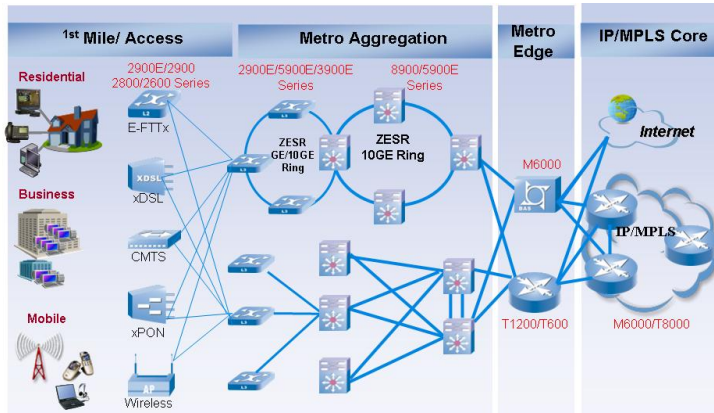
- Broadcast messages, multicast and unknown unicast messages can be restricted at the ingress ports, to protect the CPU from traffic impact.
- Two-way ACL enables deploying different ACL rules against ingress and egress traffic on the same port.
- DAI function can effectively restrict ARP DOS attacks.
- Supports message mirroring, sFLOW and RSPAN functions.
- With intelligent statistics, users can count frames in any stream or any port. The statistics can be in fine granularity to a certain subscriber or even to a certain service of a subscriber, providing effective monitoring for Fine Operation.

Easy-POE

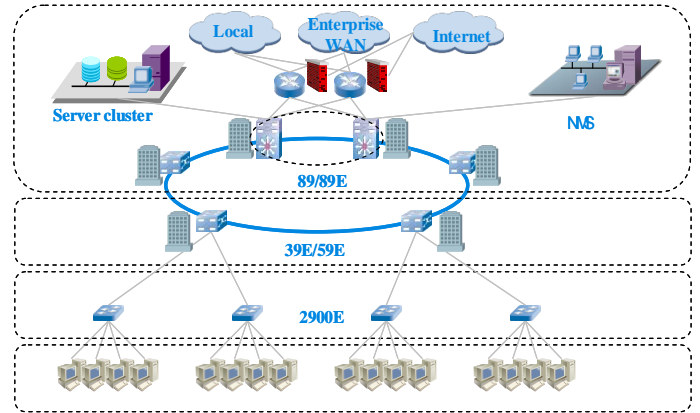
- ZXR10 2910E-PS/2918E-PS support 802.3af and 802.3at standards, providing up to 30W on every port.
- Support overload & short circuit protection, open circuit detection.

ZXR10 2900E Series Switch Application

--Carrier-class MEN Solution



-- Enterprise network access



Interfaces

Type	2910E-PS	2918E-PS 2918E	2928E	2952E
Fixed FE RJ-45	8	16	24	48
Fixed GE RJ-45	2 Combo	2 Combo	2 Combo	-
Fixed GE optical	2 Combo	2 Combo	2+2 Combo	4

Feature list

Specifications	2910E-PS	2918E-PS/2918E	2928E	2952E
L2 protocols	IEEE 802.3, IEEE 802.3u, IEEE 802.3z, IEEE 802.3x and IEEE 802.1p, IEEE 802.1d STP, IEEE802.1w RSTP, IEEE802.1s MSTP, IEEE 802.3ad LACP, IEEE802.1Q, 4K VLAN, VLAN based on port, protocol and subnet, PVLAN, QinQ, ESRP(ZESR), ZESS.			
Advanced Features	Stacking, PoE(2910E-PS/2918E-PS), M-button, OAM, IPV6 ACL, Mixed ACL filtering of L2, L3, and L4.			
QoS features	Eight priority queues; L2-based priority queuing; Flow control based on L2, L3, L4 source and destination ; Bandwidth control: Port-, application- and flow-based bandwidth control with granularity of 64kbps;			
Service features	Multicast: IGMP Snooping and controllable multicast protocols. Authentication: 802.1x User Positioning: VBAS and DHCP Option 82 Security: Anti-Attack (Virus) Protection; MAC address flood protection; ICMP security			
Physical dimensions (H×W×D)	43.6×340×220 mm	43.6×442×220 mm	43.6×442×220 mm	43.6×442×280 mm
Maximum weight	3.0kg	3.8kg/2.8kg	3.0kg	3.4kg
Power supply	AC : 100V~240V, 50Hz ~60Hz; DC:-48V±10%			
Maximum power	<247.3W(240W PoE)	<489W(480W PoE)/8.1W	<8.4W	<19.5W
MTBF/MTTR	100,000 hours/30 minutes			
Environment	Storage temperatur:-40°C ~ +70°C; Operating temperature:-5°C~+55°C; Humidity:5%~95% (non-condensing)			

ZTE CORPORATION



ZTE Plaza, Keji Road South, Hi-tech Industrial Park, Nanshan District, Shenzhen, P.R.China
 Postcode: 518057
 Website: Http://www.zte.com.cn
 Customer Support Center:
 Phone: (+86755)26770000 | Fax: (+86755)26771999
 E-mail: Support@zte.com.cn